



BLUE FOREST
THE TREEHOUSE PEOPLE



Creating Memories & Inspiring Dreams







elcome to our unique world of imagination and creativity. I grew up in Africa where I spent my childhood enjoying the beauty of the great outdoors, and Blue Forest was born from these experiences and from a desire to make the world more adventurous.

We are an award-winning company renowned for pushing the boundaries of design, and bringing a touch of magic to our creations.

Our skilled team of architectural designers, interior designers and project managers will work with you to create a treehouse that is completely personal to you.

We provide you with a coherent and complete design, construction and management service that allows us to mastermind your project from conception to completion. Whatever your dreams, we can turn them into a reality.

A handwritten signature in black ink that reads "Andy Payne." The signature is written in a cursive, flowing style.

**“No matter what your interest – sit back, relax
and let your imaginations run wild!”**

ANDY PAYNE, MD, BLUE FOREST





BLUE FOREST

THE TREEHOUSE PEOPLE


| | | | |
|--------------------------------------|---------|---------------------------------|---------|
| Welcome _____ | 5 | Mystical Castle Treehouse _____ | 32 - 33 |
| Introduction _____ | 9 | Treehouse Gallery _____ | 34 - 35 |
| The Lookout Treehouse _____ | 10 - 11 | Fairytale Castle _____ | 36 - 37 |
| Faun's Realm _____ | 12 - 13 | Treetop Treehouse _____ | 38 - 39 |
| Timbertop Hangout _____ | 14 - 17 | Woodland Hideaway _____ | 40 - 41 |
| Rustic Cabin _____ | 18 - 19 | At The Water's Edge _____ | 42 - 45 |
| City Living Treehouse _____ | 20 - 21 | The Magic Home _____ | 46 - 49 |
| Treehouse Gallery _____ | 22 - 23 | Treehouse Gallery _____ | 50 - 51 |
| The Boat House _____ | 24 - 25 | Inspired By Nature _____ | 52 - 53 |
| Treehouse Kitchen _____ | 26 - 29 | The Design Process _____ | 54 - 55 |
| The Enchanted Garden Treehouse _____ | 30 - 31 | FAQ's - What Happens Next _____ | 56 - 57 |

“The attention to detail
is extraordinary and the
craftsmanship really immaculate.
We cannot praise the whole
process and the finished product
highly enough. Thank you.”

NATASHA KAPLINSKY, SUSSEX





 Treehouses evoke childhood memories, imagination and creativity. Despite the traditional stereotype however, treehouses are not just for children!

Our designs come in every shape, form and style. Each project is finished to the highest standard by our team of experienced craftsmen – there are no limits to how you could use your treehouse, if you can imagine it, the chances are we have built it in the treetops!

- Treetop Hideaways
- Blissful Family Retreats
- Fairy-tale Playhouses
- Romantic Getaways
- Fully Equipped Home Offices
- Children’s Dens and Play Structures
- Teenage Hangouts
- Party Venues and Entertaining Spaces
- Yoga Studios, Meditation Platforms and Art Studios

“People tell me they are extending their house and I say build a treehouse instead. It’s the price of a large conservatory but much more fun.”

SHARON SMITH, WEEKEND FINANCIAL TIMES



The Lookout Treehouse Family Treehouse



The Lookout Treehouse has been designed for everyone in the family. With breath taking views of the far-reaching countryside, the treehouse deck is the perfect spot to relax and enjoy the sunset while the children create their own outdoor adventures!

The treehouse itself has been designed with children in mind, while also providing space for those that are young-at-heart. Inside there are two wonderfully cosy window seats, perfect for curling up with a good book on a winter's day while the wood-burning stove keeps you nice and toasty.

Outside, there is plenty to keep you occupied, from the wobbly rope bridge to the climbing net,

exhilarating slide and even a basket and pulley to transport any snacks from ground level up to the treehouse. The addition of a swing set ensures children of all ages will be kept entertained for hours on end.

What we really love about this treehouse is that it has been built amongst the trees so perfectly that it looks like it has been there for years!

The magnificent tree in the centre of the deck adds wonderful shade protection in the summer and creates a picture-perfect setting for this beautiful treehouse.

“It’s far too nice for the kids, I’m thinking of moving in myself.”

MR. A STALEY, STAFFORDSHIRE



Faun's Realm Children's Treehouse



Stepping into the Faun's Realm Treehouse will transport you into the magical land of Narnia. The children of the family were the key influencers for this scheme with the design developed from their own ideas, making the treehouse a personal space for building memories and experiencing adventures.

From the copper dragon scales on the turret roof to the hand-carved toadstool table and chairs, this treehouse's design lends itself to the incredible fantasy world created in the classic books by C.S. Lewis. Running over the rope

bridge, it is impossible not to imagine yourself crossing the Eastern Ocean to the world's end.

Inside you are transported to a pixie grotto where glowing moon orbs hang from the ceiling and pink blossoms grow from the beams. Beautifully finished to the highest standards, the spacious interior includes storage space for toys built underneath a cosy bay window seat and a great hand-crafted Oak wardrobe with a secret hobbit door that opens up to reveal a mighty stainless-steel slide curving out to the garden below.



Timbertop Hangout Family Treehouse



A shady woodland path brings you to a hideaway that offers a magical treetop experience. Nestled within the branches of a mature Oak tree, Timbertop Hangout allows you to disappear from a busy life, get close to nature and relax with your family.

The curved treehouse offers a multi-purpose kids hideout, with its large bay window making it ideal for sleepovers. Amidst the leaves and branches sits an additional crow's nest lookout raised high above, accessed by a ladder leaning against the trunk of the tree.

Here you can unwind to the sound of the breeze rustling through the leaves as you sit with a book or look out over the spectacular panoramic views.

Although perfect as an idyllic garden retreat, this treehouse was primarily designed for keeping energetic kids playing outside for hours. If it's adventure that you're looking for, a 60m zip-wire offers an exhilarating ride like no other through the trees.

**“Why should children have all the fun?
There's room in the branches for grown-ups...”**

SONIA PURNELL, THE SUNDAY TELEGRAPH







Rustic Cabin Family Treehouse



Set within the mature trees of a farmhouse garden sits a quirky, rustic cabin treehouse, designed as a cosy, yet adventurous escape for the grandchildren to enjoy.

The treehouse consists of two levels, with a small ladder to clamber up and down, as well as a basket and pulley for the children to transport toys between the levels.

Rustic Cedar shakes, charred timber cladding and reclaimed timber have been used to give the treehouse a delightfully natural and weathered

look. The unique design features within this treehouse are endless! The lower level has been decorated beautifully, with reclaimed boat shelving above a gorgeous, yet rustic desk.

The upper level is perfect for sleepovers, lazing about on giant floor cushions or curling up on the bay window seating area with a good book. But the treehouse is not only about relaxing days spent enjoying the warmth and inviting atmosphere inside, it also offers fun and excitement with a zip-wire and adventure play deck.



City Living Treehouse Children's Treehouse

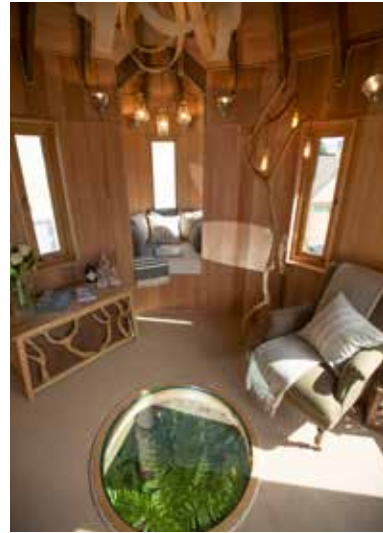


A London based client wanted a garden play structure and hobbit house that would be both modern and playful at the same time. The adventure play structure has multiple play decks featuring a fixed ladder between levels, a slide and a fireman's pole.

The addition of a chill-out net and secret trap door make this elegant play structure a place where children are bound to spend endless hours outdoors. Flip down the blackboard and you create an instant outdoor table too – perfect for a picnic or quick snack breaks!

The beautifully crafted hobbit house blends into the garden perfectly creating a cosy hideaway where the children can relax with a book or play with their toys on those cold, rainy days. The circular door and windows add to the magical feel of this little hobbit house, where children's imaginations can run wild.

Each element of the play structure and hobbit house has been designed with context in mind, therefore the materials, size and scale compliment the property without causing any detrimental impact on the neighbouring properties – which is perfect for city living.







The Boat House



This luxurious Boat House was commissioned by a client who wanted to create an unusual and contemporary space for entertaining as well as housing their boating equipment. The idea behind the Boat House was to create a discreet, unassuming building that would sit comfortably within the landscape, which would transform into a sleek and modern structure.

The Boat House is truly unique, with adjustable timber wall panels that transform the space from a cosy lakeside retreat in the winter to an al-fresco dining venue in the summer.

The kitchen, dining area and living space are open plan with large sky lights and expansive windows, ensuring that even when the wall panels are down, there is still plenty of natural light flowing into the space. The interior has been expertly decorated following a nautical theme and compliments the contemporary building beautifully and the addition of a log burner ensures the building remains warm and cosy during the winter months.

The timber cladding, which will gradually weather over time, offers an organic appearance and flows perfectly into the decked area and the natural surroundings.

“Treehouses have moved on since Enid Blyton’s Secret Seven built their den in Windy Woods...(Blue Forest) will fulfil your every treehouse fantasy...”



Treehouse Kitchen Family Treehouse



This treehouse is where the founder of a gourmet food company dreams up new recipes for her exclusive clients. A rope bridge trail leads you from one tree platform to another and by the time you reach the treehouse and step into the bright, comfy calm of the kitchen, you're in your own private world.

The spacious kitchen takes centre stage – seated at the large table, you can imagine how it caters for the group cooking lessons that are regularly

hosted to raise funds for the Prince's Trust; with the clanging of pots and pans in the background and the rich smells of home-made soups and sauces in the air.

Children can spend hours together on the play deck, racing down the slide and taking turns on the zip-wire. There's an outdoor seating deck that looks out across the gardens where you can sit around the fire pit and eat with friends as the evening draws in.

“We simply cannot praise the Blue Forest team enough, they were always working hard with an obvious attention to detail and passion for what they do. I could not recommend them highly enough.”

JENNIFER IRVINE, SURREY







The Enchanted Garden Treehouse
Children's Treehouse



This gorgeous little treehouse sits nestled amongst mature trees within an expansive garden, creating an enchanted playground for the client's young children. The treehouse and play area have everything needed to keep the children amused for hours.

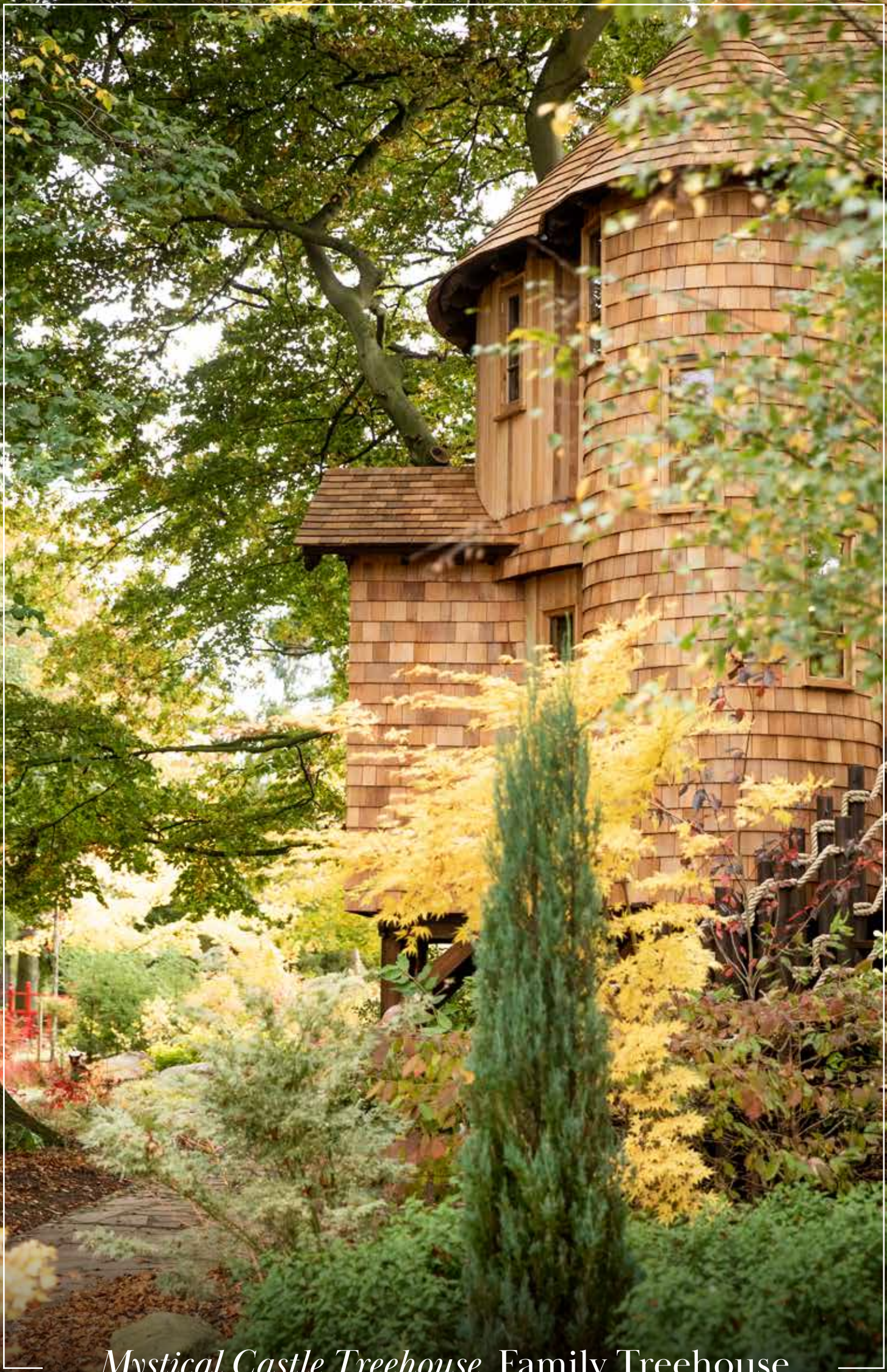
As you step inside the Enchanted Treehouse you are met with whimsical delight, from the cloud lights on the walls to the magical floating ceiling lights, the snug and inviting bay window seat and of course the delightful Narnia wardrobe – opening to reveal the slide inside.

Fun and adventure were key elements when designing the Enchanted Treehouse. From the Narnia wardrobe inside, to the secret trap door, the wobbly rope bridge and obviously no adventure treehouse should be without an exhilarating zipwire.

If that is not enough to keep you busy, you can clamber up the climbing wall, slide down the fireman's pole and raise your teddies and toys up to join you in this magical little treehouse using our signature basket and pulley.

**“With views over my pool and garden,
it's the perfect place for pre-dinner drinks.”**

MR DAVID LLOYD, SURREY



Mystical Castle Treehouse Family Treehouse



The Mystical Castle Treehouse has been designed as a family treehouse, with something for everyone. The spiral staircase leads you up to the expansive main treehouse deck which has two adjoining decks that are accessed via rope bridges on either side. One takes you to a play deck, with a magnificent crow's nest, and the other leads down to a luxurious entertainment deck with an outdoor bar and covered dining area, perfect for the adults to enjoy an alfresco meal or cosy evening drinks around the firepit table.

As you make your way back to the main treehouse deck, you are welcomed into a magical world of

wonder and adventure. The 2-story treehouse, clad in a mixture of vertical and Cedar shingles, is perfectly positioned amongst the trees, and offers a wonderful space for children and adults to enjoy.

Downstairs there is an expansive open-plan area with kitchenette and guest toilet off to the side. As you climb the winding staircase, you enter the fun-filled children's den, complete with Narnia wardrobe and secret slide entrance. The fairytale turrets, reading nooks and additional play equipment add to the magical feel of this truly beautiful Mystical Castle Treehouse.

“The treehouse has a great calming, positive effect and is a very inspirational place for me to escape to.”

MS BAGEDO, THE OBSERVER







Fairytale Castle Family Treehouse



Nestled within a secret garden full of colourful undergrowth and tall ferns, this hidden treehouse showcases beautiful gothic features, including a grand 6m tower and a solid Oak arched window. The structure is built around a copper Beech tree, which grows through the main living room.

Exterior decking has been built around surrounding trees, making it look like the branches have wound their way in between the nooks and crannies of the

fairy-tale house. As the evening draws in and the sun sets over the treetops, you can retreat inside to the bay window and watch out for woodland animals as they scurry about below you.

For a more spectacular view, a spiral staircase winds upwards to a look-out platform at the top of the high tower. For a bit of speed and adrenaline, a 45m zip-wire lets you launch yourself from the deck and accelerate through the trees.



Treetop Treehouse Family Treehouse



With stunning views across the landscape, the Treetop Treehouse creates a wonderful family retreat with a gorgeous adjoining dining deck, creating the perfect entertainment space. As you enter the treehouse, your eyes are instantly drawn upward to the elegant Tom Raffield light fitting and beautifully crafted wooden beams.

The internal space includes a living area with wood burning stove, and a fully-fitted kitchenette complete with oven, fridge and dishwasher. There is also an expansive bathroom with walk-in shower, ensuring the treehouse is completely self-contained.

The internal walls of the treehouse are lined with Cedar tongue & groove boards, giving the structure a light and airy feel and a lovely woody aroma. The highlight of this treehouse has to be the expansive decking area. We have created a wonderful outdoor dining space on the treehouse deck which is perfect for al fresco dining.

Additionally, the adjoining entertainment deck, with its cosy outdoor furniture and firepit table offers the most spectacular views across the local countryside – perfect for sundowners or lazy afternoons spent enjoying time outdoors.



Woodland Hideaway Family Treehouse



Our brief for the Woodland Hideaway was to create a wonderful family retreat that could also provide luxury guest accommodation on our client's Estate. With this in mind, the treehouse was carefully positioned amongst the trees within the woodland to provide privacy and seclusion, with stunning views across the valley.

The outdoor entertainment area was a key part of the design for this treehouse. The expansive decked area has ample space for outdoor entertaining and the adjacent firepit, accessed via a rope bridge, ensures the outdoor space can be used all year round.

As you enter the treehouse from the private satellite deck, you are greeted with a beautifully decorated living space complete with kitchenette, wood burning stove, dining, and seating area. The addition of a day bed in the form of a cosy window seat adds a romantic feel to the Cedar-clad treehouse.

Hidden off to the side of the living space is the delightful double bedroom with elegant stand-alone bath and adjoining shower room. The expansive deck can be reached from both the bedroom and living room areas, through double French doors, bringing the natural world indoors and creating an inviting woodland hideaway, perfect for friends and family to enjoy.

“It’s fantastic, we’re delighted.”

THE OWNER



At The Water's Edge Family Treehouse



With a collection of treehouses for the young ones and a tranquil lake house for the adults, everyone in the family has their own space to enjoy. The first thing that catches your eye is a gleaming copper roof among two Cedar turrets. Each treehouse has been designed with different styles to reflect the personalities of each child in the family.

There is plenty of space inside the treehouses for the children to keep their own toys. Cosy bay window seats overlooking the gardens are great for spending rainy afternoons inside with a film. Indiana-Jones style rope bridges connect

the decks so the children can run across to each other's treehouses before climbing up the cargo net or sliding down the fireman's pole. The grown-ups can sit back on the deck overlooking the koi carp lake or de-stress in their own personal gym in The Lake House while the kids play nearby.

On summer days, cool off with a swim in the pool featuring a bespoke waterfall. When it's not needed, the pool is cleverly concealed under made-to-measure panels which gives even more space. As night falls, mood lighting across the decking can be altered using a Crestron control system.

“Fitted with all mod cons, treehouses are no longer just for kids.”

WENDY SLOANE, SUNDAY TIMES







The Magic Home Family Treehouse



The Magic Home overlooks the beautifully tended gardens and tennis court from its elevated position on the edge of the grounds.

Inside, a spiral staircase can be found hidden behind a revolving bespoke bookcase. The secret staircase twists up to a playroom with beautiful beams, a dormer window and a glazed balustrade that looks down to the main room below. A desk made from giant story books nestles in the corner and a moon light hangs from the ceiling.

If you open the doors to a Narnia-inspired wardrobe, you'll discover the entrance to a tubular

stainless steel slide which curves all the way around the treehouse to the sandpit outside. A truly unique space, the treehouse is also perfect for entertaining friends and visitors with a bespoke curved day-bed sofa. Standing in the centre of the living space is an eye-catching de-barked tree support column with LED floor lights surrounding the base.

A marble-topped kitchenette allows for afternoon lunches or evening party canapes to be easily prepared from the treehouse, which can then be enjoyed on the decks outside.











Inspired By Nature Our Philosophy

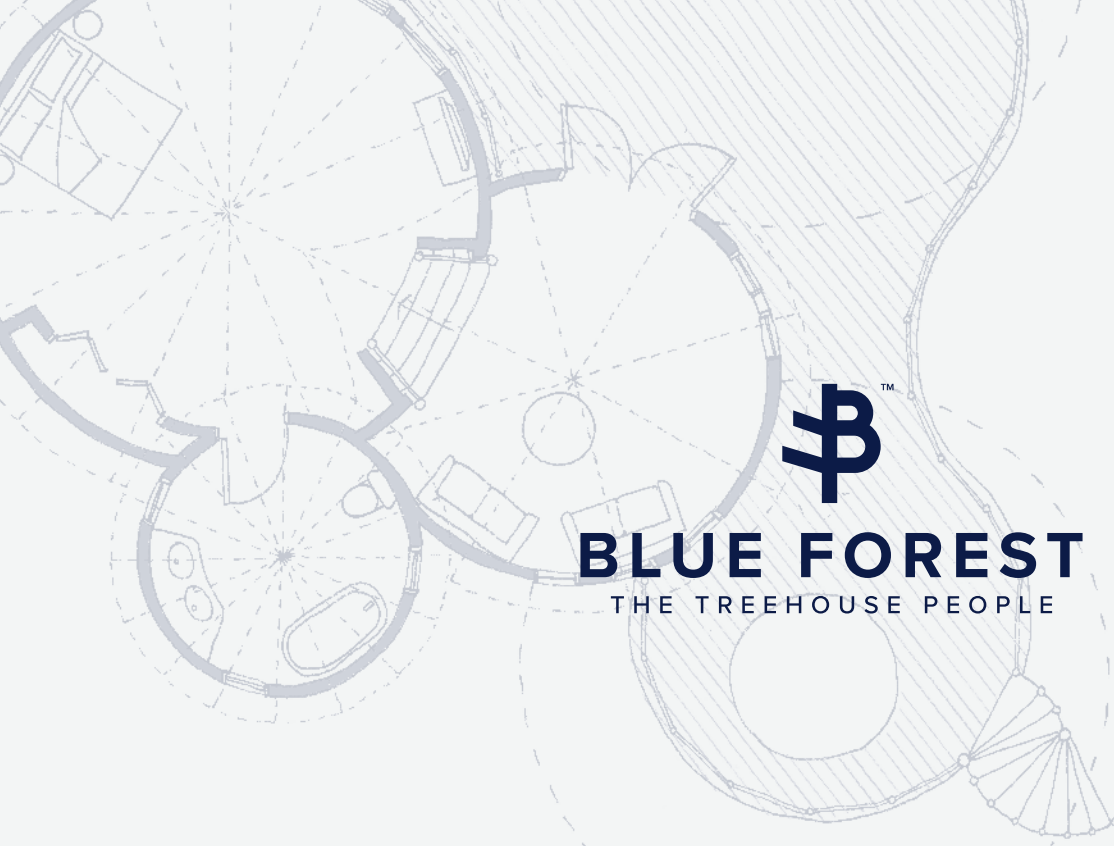


Through the unique and creative nature of our designs, Blue Forest aims to change people's perspectives; unlocking their imaginations and transporting them into a treetop world above the stresses of everyday life.

We seek to combine environmentally sensitive techniques with ethical working practices,

providing all our clients, both private and commercial, with the highest standard of service no matter what their requirements. We pride ourselves on our highly skilled team, including designers, crafts people and project managers, who ensure our treehouses are at the forefront of sustainable luxury design.

“Blue Forest’s bespoke tailored services provide an effortless solution, where the process from design to the finished product is handled, to ensure clients and customers end up with a perfect treehouse.”

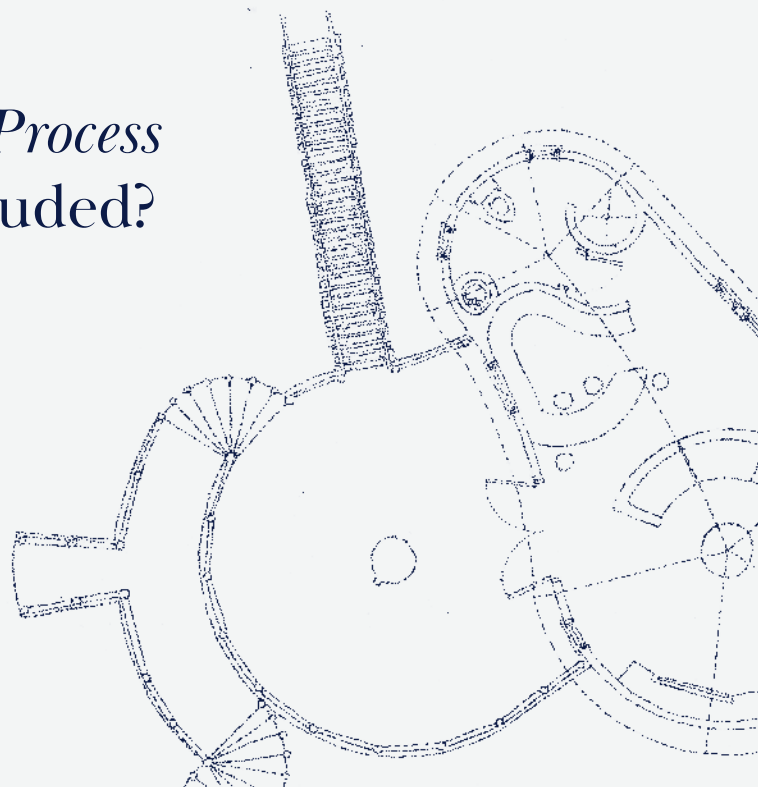


Blue Forest's creative design team specialise in the conception of unique and inspiring structures that reflect the beauty of the natural world.

If you are interested in building a treehouse it is wise to think ahead as the design and planning process can take several months.

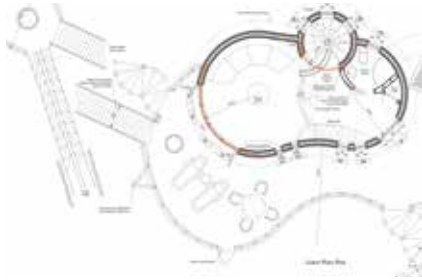
First we conduct an initial survey, and once we have received your confirmation to proceed the team will begin work on your Design Proposal which normally takes 3 – 4 weeks.

The Design Process What's Included?



PLANS

Your Design Proposal will be presented to you in a personalised A3 portfolio. This will include scaled treehouse floor and site plans showing the location of all significant trees and environmental features.



ELEVATIONS

Scaled elevations are included, representing a view of the design at eye level. Each elevation shows the location of all the key building elements including rooflines, windows and doors, etc.



PERSPECTIVES

You will also receive various computer rendered perspectives, providing a very clear visual image of what the completed structure will look like once it is built. The perspectives also illustrate the choice of exterior cladding and roof materials etc.



INTERIORS

Our interior designer will work with you to create a scheme for your treehouse, including the lighting and fixtures, to reflect your personal taste. Visual mood boards will be included to help illustrate the overall style.



QUOTATION

As part of your proposal we will lay out our cost quotations along with any additional design options you might like to consider.

SCHEDULES

Finally, we will provide you with an estimated time period for the proposed construction works required. This will be subject to any additional design options chosen and is weather dependent.



FAQ's

Questions naturally arise when considering such a unique addition to your home, be it a family retreat, a playhouse or an art studio. Below are some of the more frequently asked questions and their answers, but if you'd like any additional information then of course please contact us using the details opposite.

DOES BLUE FOREST ONLY DESIGN TREEHOUSES?

Although we are best known for our treehouses, we have developed expertise in other projects including woodland playgrounds, classrooms, lodges and canopy walkways.

WHAT SERVICES DO YOU OFFER?

Our tailored service provides a turnkey solution, where everything from design and planning to construction and commissioning comes in a professional package.

WHAT IS THE PROCESS AND HOW LONG DOES IT TAKE?

It can take time so it's always worth thinking ahead. A member of the team will visit you to discuss your ideas and undertake a survey of the location.

We aim to provide you with a set of plans and an itemised quotation within 3-4 weeks. If you proceed there can be a wait of up to 3 months (depending on the time of year) until we are able to commence construction. On average, construction takes between 6-8 weeks depending on the size of your project.

DO I NEED A MATURE TREE TO SUPPORT MY TREEHOUSE?

Not necessarily. The structure can be self-supporting.

IS PLANNING PERMISSION REQUIRED?

An elevated structure in the trees will require planning permission. For a ground based building, planning will depend on its location, its size, the height of the structure and what you intend to use it for. We can offer advice and guidance, and act as agents on your behalf.

HOW MUCH WILL IT COST?

That's entirely up to you, the sky is the limit! All Blue Forest treehouses are bespoke so we are unable to provide a price until we have completed a full site survey. Projects start from approx. £30,000. We will work with you to ensure we create the perfect treehouse for you.

DO YOU ONLY BUILD IN THE UK?

We mainly work in the UK and Europe but we have worked on projects across the world, as far as Panama, The Maldives, Borneo and Malawi. We would be happy to talk to you if you are located outside the UK. We also offer a design or architectural consultancy service for customers who are further afield if required.

ONCE BUILT, DO YOU OFFER MAINTENANCE?

We have a comprehensive annual treehouse maintenance service. Maintenance is required every year to ensure that the structure and trees remain secure for years to come, and more importantly that its users are not put at any risk.

The Adventure Starts Here

Creating a Blue Forest treehouse is an exciting process. Our experienced and highly skilled team will involve you at every stage to create a personal design that you will love.

OUR PROCESS IS AS FOLLOWS:

AN INITIAL CONSULTATION

We would be delighted to arrange a consultation at a convenient time in order to:

- Listen to your ideas and requirements
- Present a selection of previous projects for your interest
- Review financial budgets
- Consider planning issues
- Discuss time scales and logistics
- Examine the surrounding environment and assess suitable locations

DESIGN STAGE:

Should you wish to proceed, we would complete a full set of scaled designs and elevations. You'll also be presented with 3D computer models of the design, providing a photo-realistic image of your treehouse before it is built. We charge a set fee for this service, calculated on the size and complexity of your project.

A COMPREHENSIVE QUOTATION

Along with our designs we will submit an itemised quotation for the construction of your treehouse. If you wish to proceed, the start date for the building works will be confirmed to you in writing upon receipt of your deposit. Each treehouse is unique, and designed to suit each customer's budget.

Contact the team to start your treehouse adventure!

CALL US

+44 (0) 1892 75 00 90

EMAIL US

info@blueforest.com

VISIT US

www.blueforest.com



BLUE FOREST
THE TREEHOUSE PEOPLE









WWW.BLUEFOREST.COM